



Unloading
imported
waste

Welcome to Fjernvarme Fyn Waste Energy

Information for drivers about registration, weighing and unloading waste, parking, etc.



FJERNVARME FYN

Welcome to Fjernvarme Fyn Waste Energy

Fjernvarme Fyn Waste Energy receives large amounts of waste every day, which is used for the production of district heating. Some of the waste is imported. In this leaflet you can read about what you need to be aware of when unloading imported waste.

Parking

When you arrive at Fjernvarme Fyn's address at Havnegade 120, you will need to use the parking bay in front of the main building at Gate 1. Remember: this space may only be used for temporary parking while handing your papers in at Reception. You can hand in your papers at the following times:

Monday to Thursday 7.00 a.m. – 3.00 p.m.,
Friday 7.00 a.m. – 2.00 p.m.



Registration

At Reception, you will receive an access pass and a number that you will need to open the boom for the unloading area.



Please note: there is only room for two trucks carrying imported waste at a time in the unloading hall. Therefore, if several trucks arrive at the same time, you might have to wait.

Entering the code and weighing the truck

When you reach the boom, stop, hold your pass in front of the card reader, and enter the code you were given. The truck is weighed automatically while you remain by the boom.



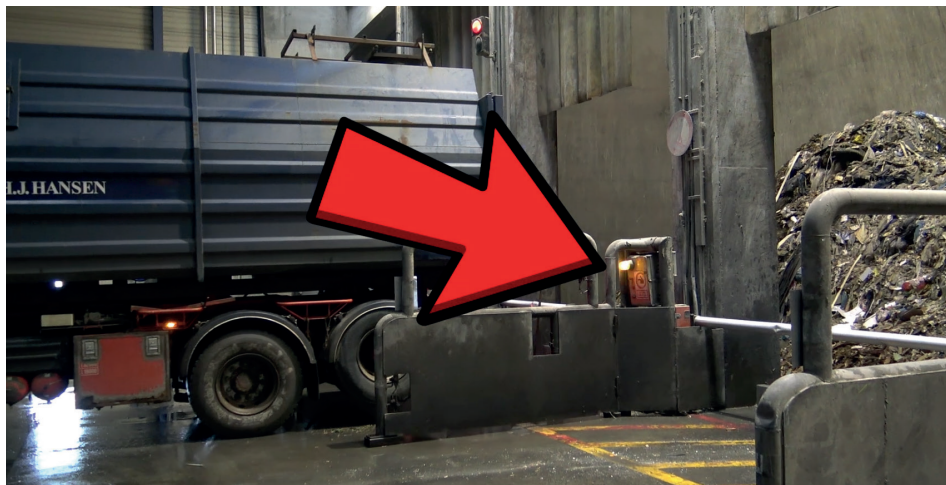
In the unloading hall

When you reach the unloading area, choose one of the bays from 5 to 9. Please note: you may only use bays with a green light. Do not use a bay with a red light.



Parking at the bay

When backing into the bay, stop when the orange light at the end starts flashing.



Opening the boom

Get your truck ready for unloading before you open the boom.

To open the boom to the waste silo, press the button under the red arrow along the side of the bay.



Important:

For safety reasons, do not enter the red area when the boom is raised.

In case of accidents

If someone falls into the silo, press the red button at the end immediately. There is a button in loading spaces 2 and 9. The cranes will then stop.



Cleaning

When you have unloaded the waste, move the truck forward slightly, and stop when the orange light stops flashing and the boom is lowered.

It is important that you clean the area using the tools provided along the side. Remember to put them back when you're done.



To prevent queues, don't take breaks in the unloading hall. Doing so will result in a fine of DKK 2,500.

Leave the unloading hall immediately after unloading and cleaning.

Registration and parking

When you reach the boom at the exit, simply hold your pass up to the card reader. The truck is automatically weighed at the same time.

The boom will be raised, and you can stop in the parking bay to the right of the exit while handing in your pass and collecting your papers. Keep in mind that this space, too, may only be used for short-term stops – not for long-stay parking.



Once you've handed in your pass and received your papers at Reception, you're ready to drive on.

Procedure in case of fire and serious accidents

1. Raise the alarm	Contact the emergency services on tel. 112.
2. Tell them:	<ol style="list-style-type: none">1. Who is calling2. What happened3. Where it happened <p>Fjernvarme Fyn Havnegade 120 DK-5000 Odense C</p>
3. Inform the control room	Inform the control room on tel. 7924 1085.
First aid kit	For minor accidents, there is a first aid kit by the control room.
Handheld fire extinguishers	If the handheld fire extinguishers have been used, the user must make sure they are replaced with new ones from Fjernvarme Fyn's storage.
Fire hoses	Fire hoses at fire points are only for use in case of fire and must not be removed from the retainers.
Evacuation	If the siren sounds with a varying pitch, the plant must be evacuated. Immediately go to the nearest meeting point, which is the control room.

Safety rules

General road safety rules must be observed on the premises of Fjernvarme Fyn Waste Energy. For safety reasons, do not drive faster than 10 km/h in the unloading hall.

If you damage to the boom system or other equipment, you must notify the control room immediately. You will be billed for the cost of the repair.

The waste unloading procedure must be observed.

You may not drive on the premises of Fjernvarme Fyn while under the influence of drugs or alcohol.

Violation of the safety rules may result in immediate expulsion.



Fjernvarme Fyn Affaldsenergi

Havnegade 120

DK-5000 Odense C

kontakt@fjernvarmefyn.dk

www.fjernvarmefyn.dk



FJERNVARME FYN